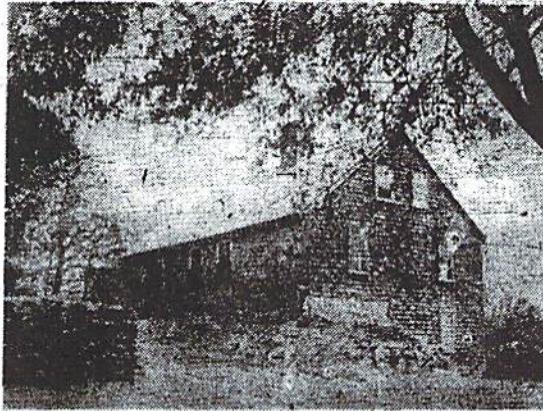


HISTORICAL HOUSES

DUXBURY CLIPPER

Thursday, April 22, 1954

Remember This Landmark?



This is a faded photo of an old cranberry factory that doubled as a boarding house around 1907, according to Harry Tammett, who remembers that the building was razed before 1933. On its site later was a swamp overgrown with huckleberry bushes and birches 30 feet high. "Then they flooded the site to kill off the swamp and built a cranberry bog."

Can anyone besides Harry give us the location?